



RHYTHM IS IN THE DETAILS

A celebration of Functionalism and craftsmanship,
the creation of **RHYTHM Charoennakhon Iconic** appreciates what it takes to give birth to
a new *‘design for living’*, incorporating *‘4 Supers’* in property development.

‘Super Architecture’, celebrated iconic curve-contoured architectural style and hundreds of Functionalistic design details are incorporated from the ground to the rooftop to create the uniformity for this new iconic design experience, making the building both recognizable on a city scale, standing out from other skyscrapers punctuating the same skyline, and iconic on a human-scale upon entering the property.

‘Super Craftsmanship’, a tribute to Modern Italian Design philosophy, bringing together new materials and forward-thinking craftsmanship, from entrance to main lobby, sky lounge to gym facility, social bar to nautical-styled terrace, to present designs that perfectly combine a futuristic style with artisanal details and materials that exude the delicate essence of a fine craft work.

‘Super Radius’, 1,000,000 square meters of luxury services and retail, including ICONSIAM and 4 leading luxury riverside hotels, are accessible within one minute, as the property is located right in the heart of River-CBD, just one step from Charoen Nakhon BTS.

‘Super Bluechip’, combining ultra-luxury hospitality-styled layouts on offer at entry-level luxury price, and a rare location on one of the last piece of prime lands right in the heart of River-CBD, promises the highest long-term return on investment, making this unique property a dream to hold.

*Pictured interior decor may be different than actual interiors in accordance with the company's terms and conditions.

BLUECHIP DESIGN RESIDENCE

*All the information and images shown are for representation of the project concept and for advertising purpose only. The company reserves the right to change the data and/or details of the construction as deemed appropriate or to be in line with the related authorities' consideration without prior notice.



IN THE HEART
OF RIVER-CBD



WELCOME FOYER & LOBBY LOUNGE

4 meters high glass atriums are designed to serve as lobby and reception saloon, surrounded by shady greenery and with access to the garden. Palettes mirror and different stone textures clad a river of seating, forming a reception area that intrigues and appeals to any taste. The *'futuristic craft'* interior style takes inspiration from design innovations of the world-famous Salone del Mobile.

*Pictured interior decor may be different than actual interiors in accordance with the company's terms and conditions.



*Picture of interior decor may be different than actual interior. Please refer to the company's terms and conditions.

BEACON OF SUPERIOR CRAFTSMANSHIP

The Iconic Lounge is located on the 29th floor just above the residential elongated pool overlooking both the majestic view of the Chaopraya river and Bangkok's skyline.

*Pictured interior decor may be different than actual interiors in accordance with the company's terms and conditions.



RHYTHMATIC GYM & PRIVATE GYM

Possibly the most stylish gym in the city, the well-equipped facility embodies an *'Italian Zen'* design esthetic. A clear departure from the average sweatshop gym, this minimalistic workout space features light natural Nordic style as key accents, transforming a gym experience into one with serenity.



*Pictured interior decor may be different than actual interiors in accordance with the company's terms and conditions.



*All the information and images shown are for representation of the project concept and for advertising purpose only. The company reserves the right to change the data and/or details of the construction as deemed appropriate or to be in line with the related authorities' consideration without prior notice.

ARTISTIC GALLERY

Offering an elegant way to enjoy the RHYTHM's sky pool and city views, grab some post-workout relaxation or host private parties, the Artistic Gallery overlooking the River Chaopraya and the city skyline strikes the finest balance between classical Japanese embellishment and modern Italian interior design.

PROJECT INFORMATION

Total Area :	4-0-86.4 Rai		
Total Units :	29-storey, Residential 577 units, Commercial 1 unit		
Parking :	60% (EV Parking Included)		
Unit Type :	Simplex		
	1 Bedroom	35	Sq.m.
	1 Bedroom Plus	43.5	Sq.m.
	2 Bedroom	62-95	Sq.m.
	3 Bedroom	130	Sq.m.
	Vertiplex		
	Type G	35	Sq.m.
	Type H	43.5	Sq.m.
	Type I	61	Sq.m.
	Type J	94.5-95.5	Sq.m.
	Type K	101.5	Sq.m.
	Type L	127.5	Sq.m.

Facilities :		
G Floor	Wharf Yard Garden Private Sanctuary Yard Main Lobby Lounge Welcome Foyer	Lobby Lounge Drop Off Co-working Space Mailroom
6 th Floor	Yacht Garden Terrace	
28 th Floor	River Hydro Pool Circular Outdoor Living Jacuzzi Pool Kids Pool Pool Deck	Swimming Pool Pool Bar Artistic Pavilion Fitness Courtyard
29 th Floor	Iconic Lounge The Grand Yacht Lounge Private Meeting Room	Private Club Sky Living Room Private Gym

MASTER PLAN



*Pictured shows unit floor plan and common area only may be different than actual interiors in accordance with the company's terms and conditions.



6th – 10th FLOOR PLAN



11th – 15th FLOOR PLAN



16th – 22nd FLOOR PLAN



*Pictured shows unit floor plan and common area only may be different than actual interiors in accordance with the company's terms and conditions.



23rd – 27th VERTIPLEX FLOOR PLAN



*Pictured shows unit floor plan and common area only may be different than actual interiors in accordance with the company's terms and conditions.



28th FLOOR PLAN



29th FLOOR PLAN

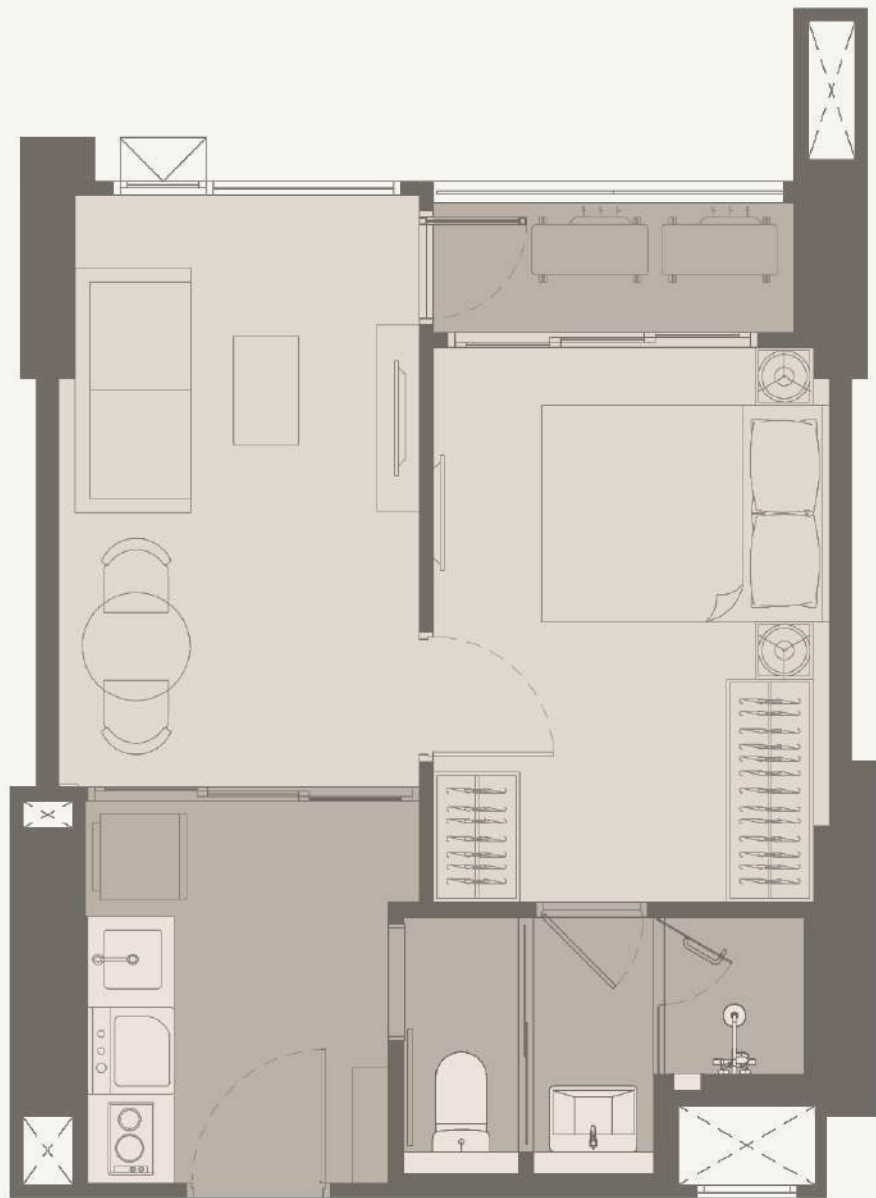




WHARF YARD GARDEN

*All the information and images shown are for representation of the project concept and for advertising purpose only. The company reserves the right to change the data and/or details of the construction as deemed appropriate or to be in line with the related authorities' consideration without prior notice.

SIMPLEX UNIT PLAN



A1 | 35 SQ.M.

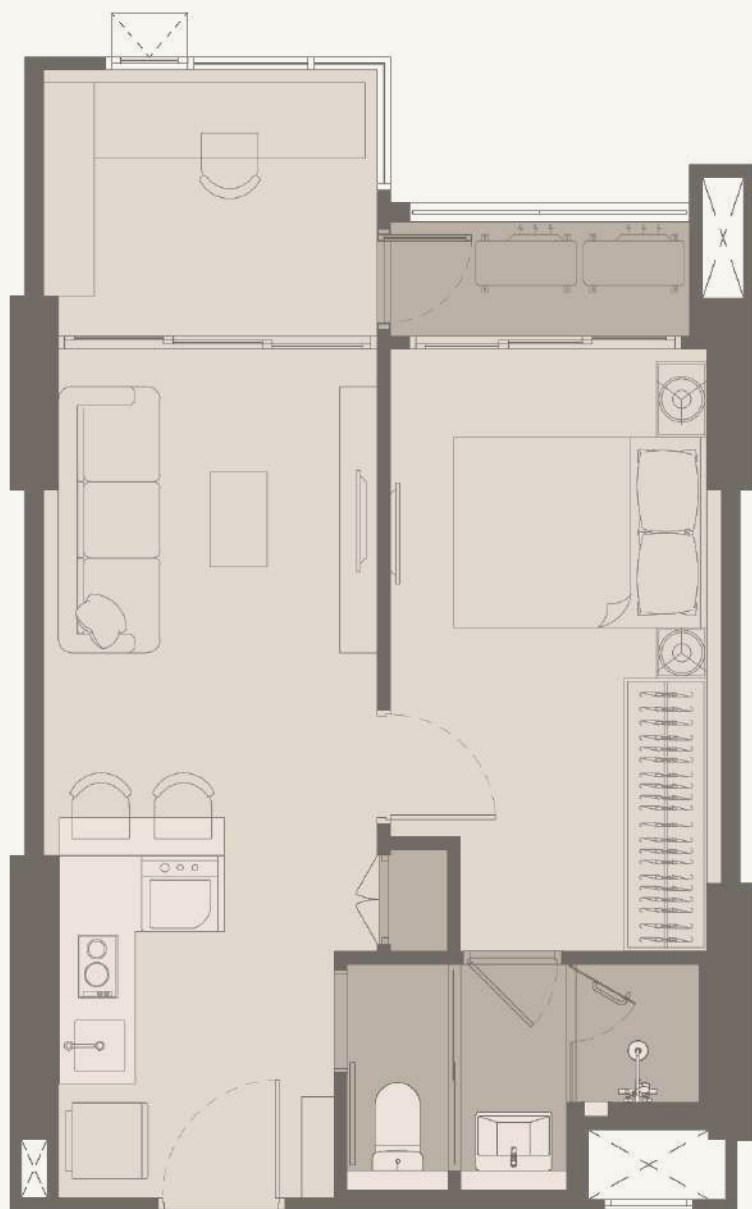
*Pictured shows the division of the living space of each unit floor plan only may be different than actual interiors in accordance with the company's terms and conditions, not included furniture.



A2 | 35 SQ.M.

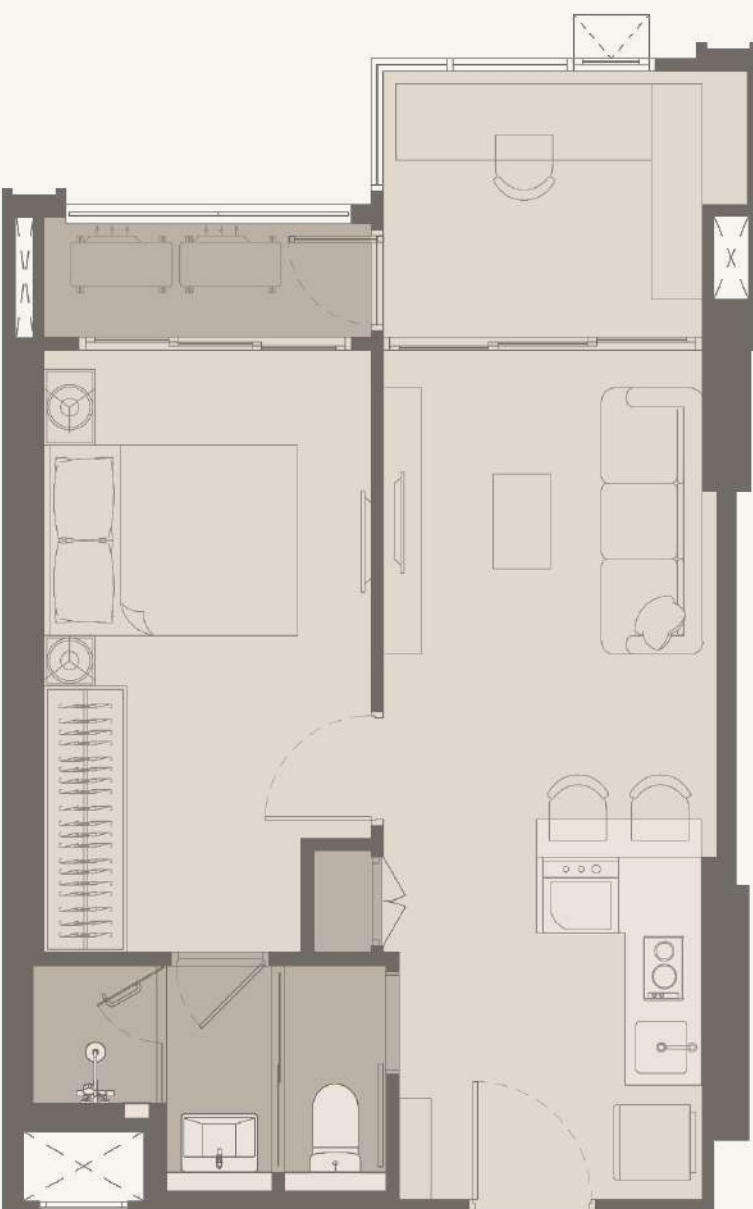
*Pictured shows the division of the living space of each unit floor plan only may be different than actual interiors in accordance with the company's terms and conditions, not included furniture.

SIMPLEX UNIT PLAN



B1 | 43.5 SQ.M.

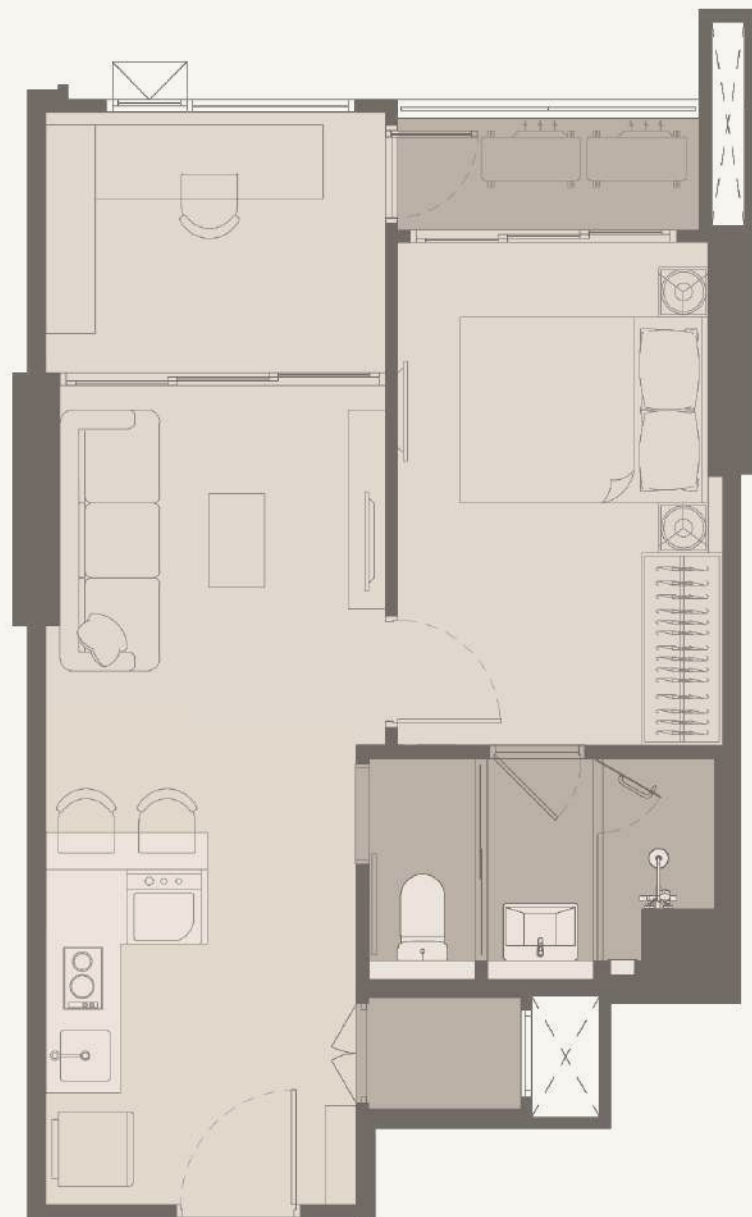
*Pictured shows the division of the living space of each unit floor plan only may be different than actual interiors in accordance with the company's terms and conditions, not included furniture.



BIM | 43.5 SQ.M.

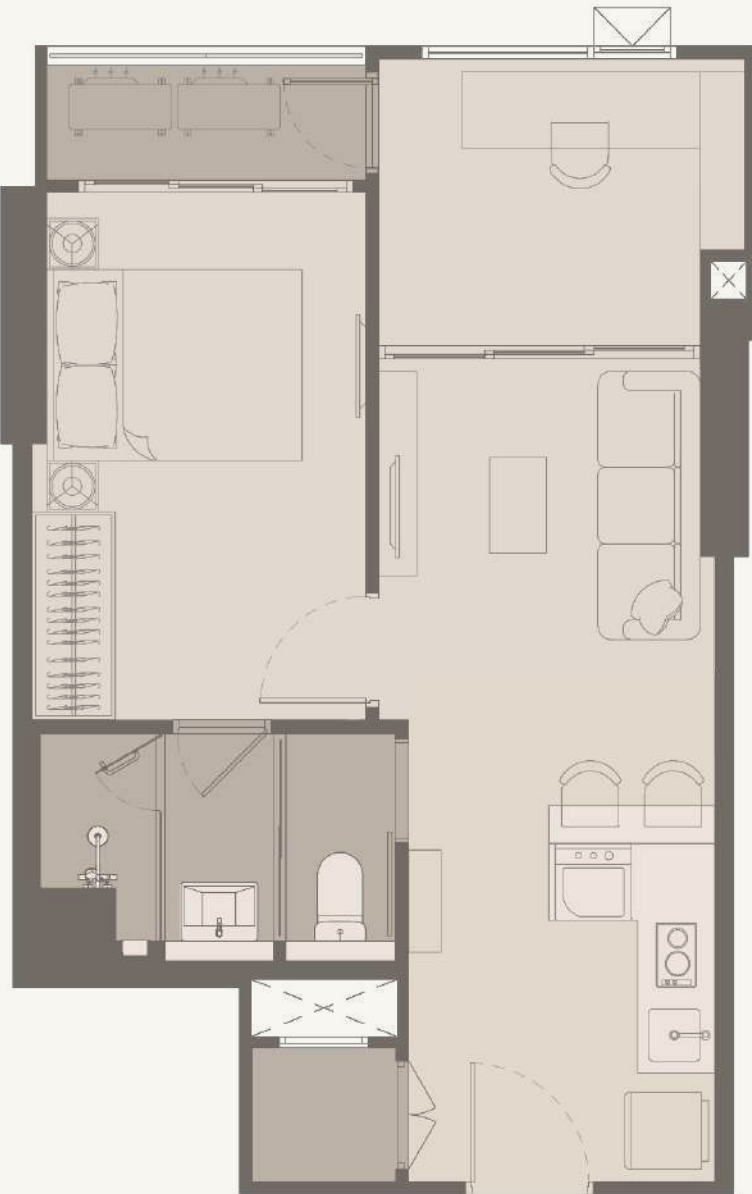
*Pictured shows the division of the living space of each unit floor plan only may be different than actual interiors in accordance with the company's terms and conditions, not included furniture.

SIMPLEX UNIT PLAN



B2 | 43.5 SQ.M.

*Pictured shows the division of the living space of each unit floor plan only may be different than actual interiors in accordance with the company's terms and conditions, not included furniture.



B3 | 43.5 SQ.M.

*Pictured shows the division of the living space of each unit floor plan only may be different than actual interiors in accordance with the company's terms and conditions, not included furniture.

SIMPLEX UNIT PLAN



C1 | 62 SQ.M.

*Pictured shows the division of the living space of each unit floor plan only may be different than actual interiors in accordance with the company's terms and conditions, not included furniture.



C2 | 62 SQ.M.

*Pictured shows the division of the living space of each unit floor plan only may be different than actual interiors in accordance with the company's terms and conditions, not included furniture.

SIMPLEX UNIT PLAN



C3 | 62 SQ.M.

*Pictured shows the division of the living space of each unit floor plan only may be different than actual interiors in accordance with the company's terms and conditions, not included furniture.



D1 | 70.5 SQ.M.

*Pictured shows the division of the living space of each unit floor plan only may be different than actual interiors in accordance with the company's terms and conditions, not included furniture.



SIMPLEX 2 BEDROOM

*Pictured interior decor may be different than actual interiors in accordance with the company's terms and conditions.

SIMPLEX UNIT PLAN



E1 | 95 SQ.M.

*Pictured shows the division of the living space of each unit floor plan only may be different than actual interiors in accordance with the company's terms and conditions, not included furniture.

SIMPLEX UNIT PLAN



E2 | 95 SQ.M.

*Pictured shows the division of the living space of each unit floor plan only may be different than actual interiors in accordance with the company's terms and conditions, not included furniture.

SIMPLEX UNIT PLAN



E3 | 95 SQ.M.

*Pictured shows the division of the living space of each unit floor plan only may be different than actual interiors in accordance with the company's terms and conditions, not included furniture.

SIMPLEX UNIT PLAN



E4 | 95 SQ.M.

*Pictured shows the division of the living space of each unit floor plan only may be different than actual interiors in accordance with the company's terms and conditions, not included furniture.

SIMPLEX UNIT PLAN



F1 | 130 SQ.M.

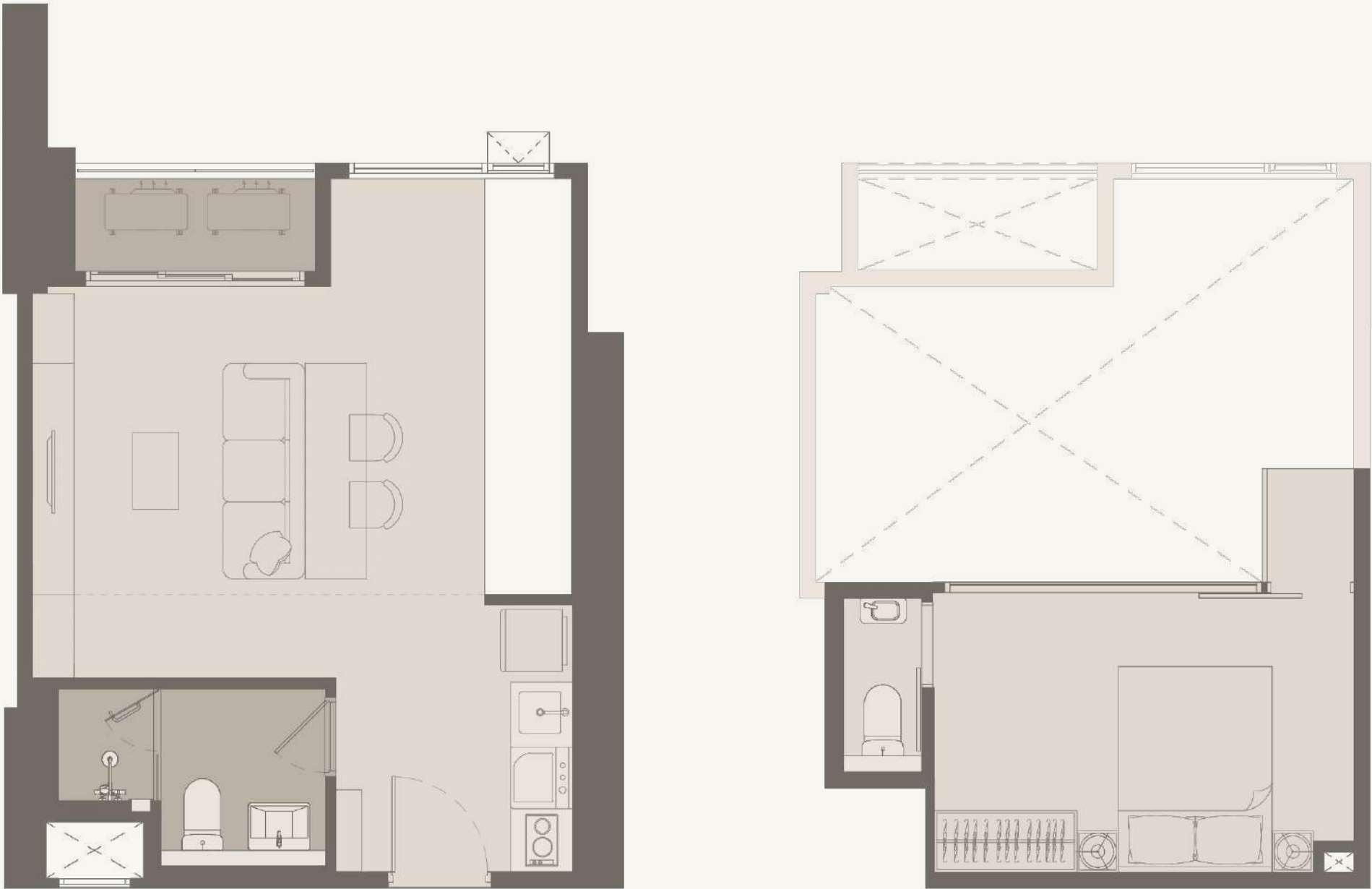
*Pictured shows the division of the living space of each unit floor plan only may be different than actual interiors in accordance with the company's terms and conditions, not included furniture.

VERTIplex



*Stair, mezzanine and room partition are considered as furniture package and shall be installed for decoration and room function only and they will be provided by third party.

VERTIPLEX UNIT PLAN

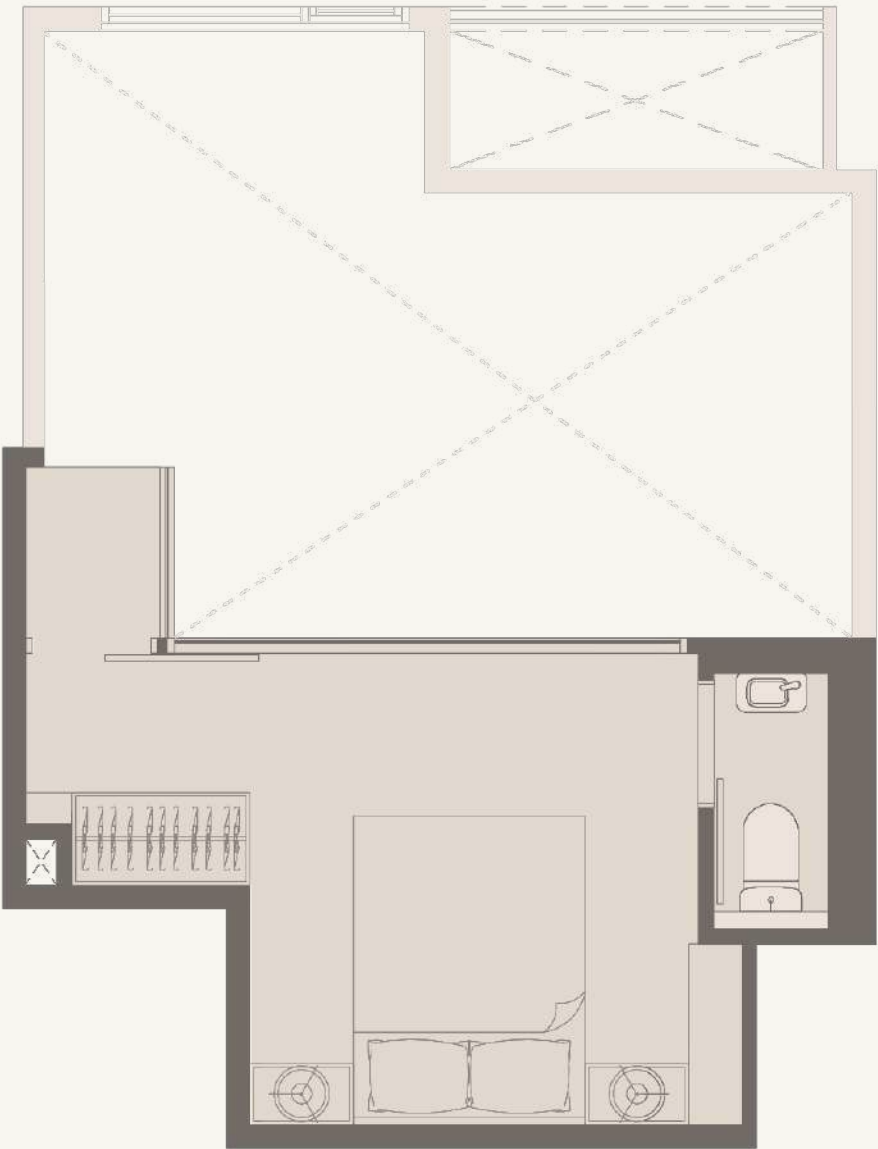
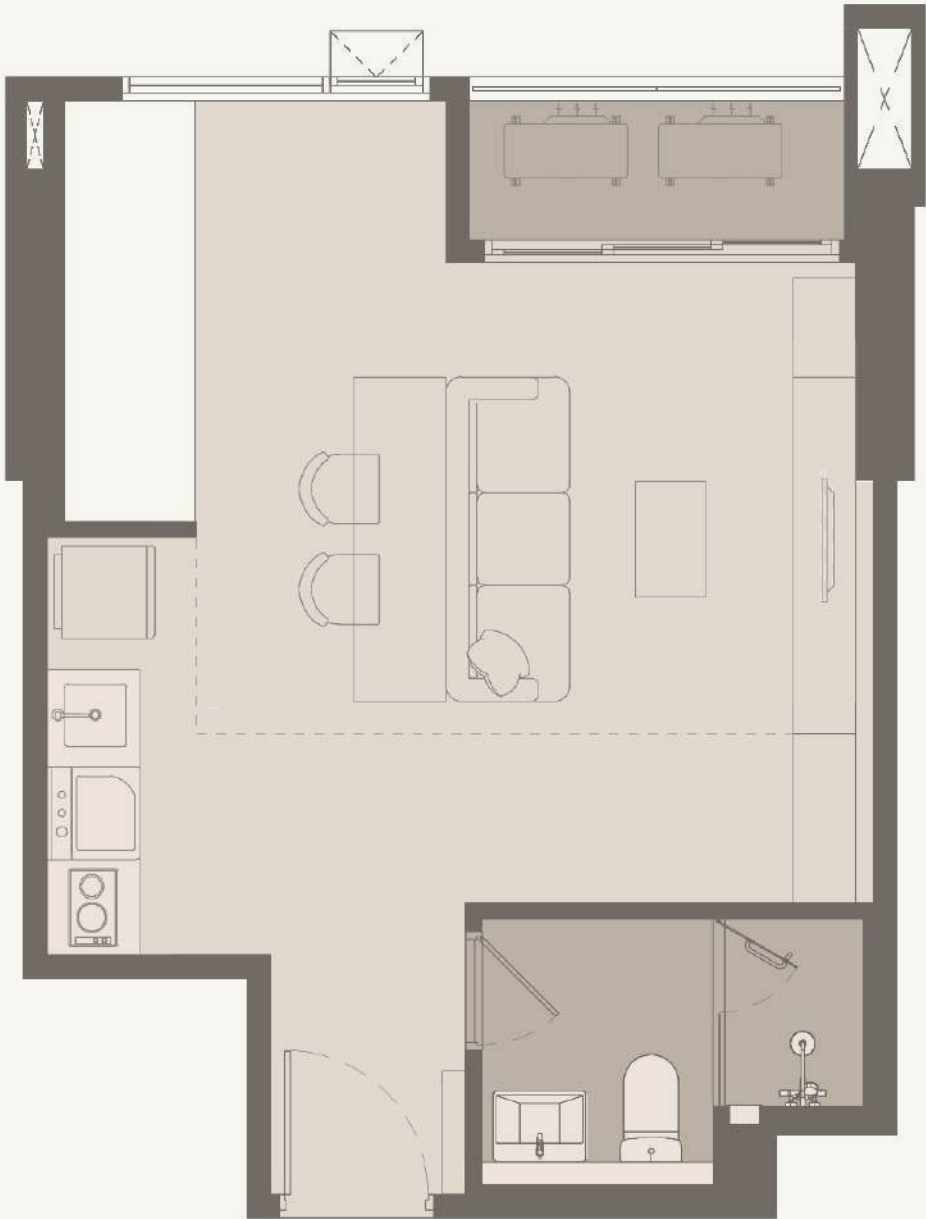


FURNITURE PACKAGE

G1 | 35 SQ.M.

*Stair, mezzanine and room partition are considered as furniture package and shall be installed for decoration and room function only and they will be provided by third party.

VERTIPLEX
UNIT PLAN

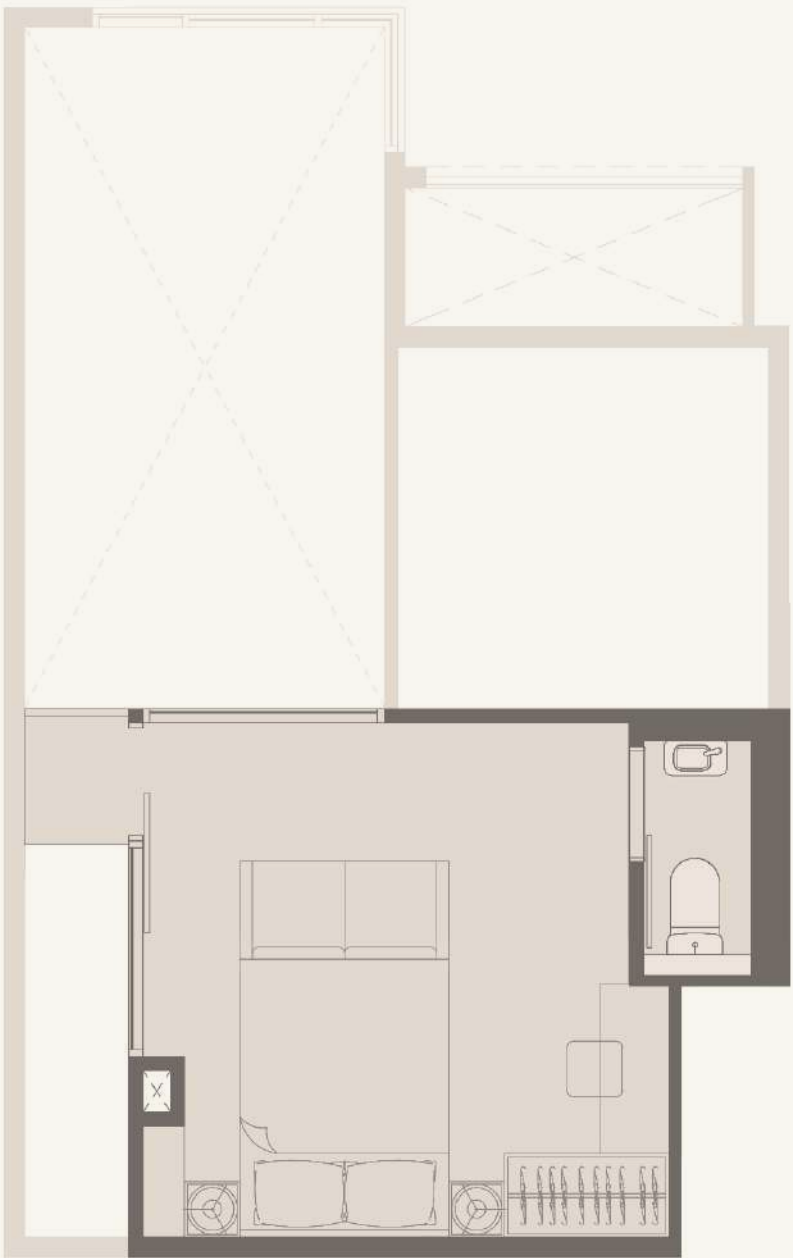
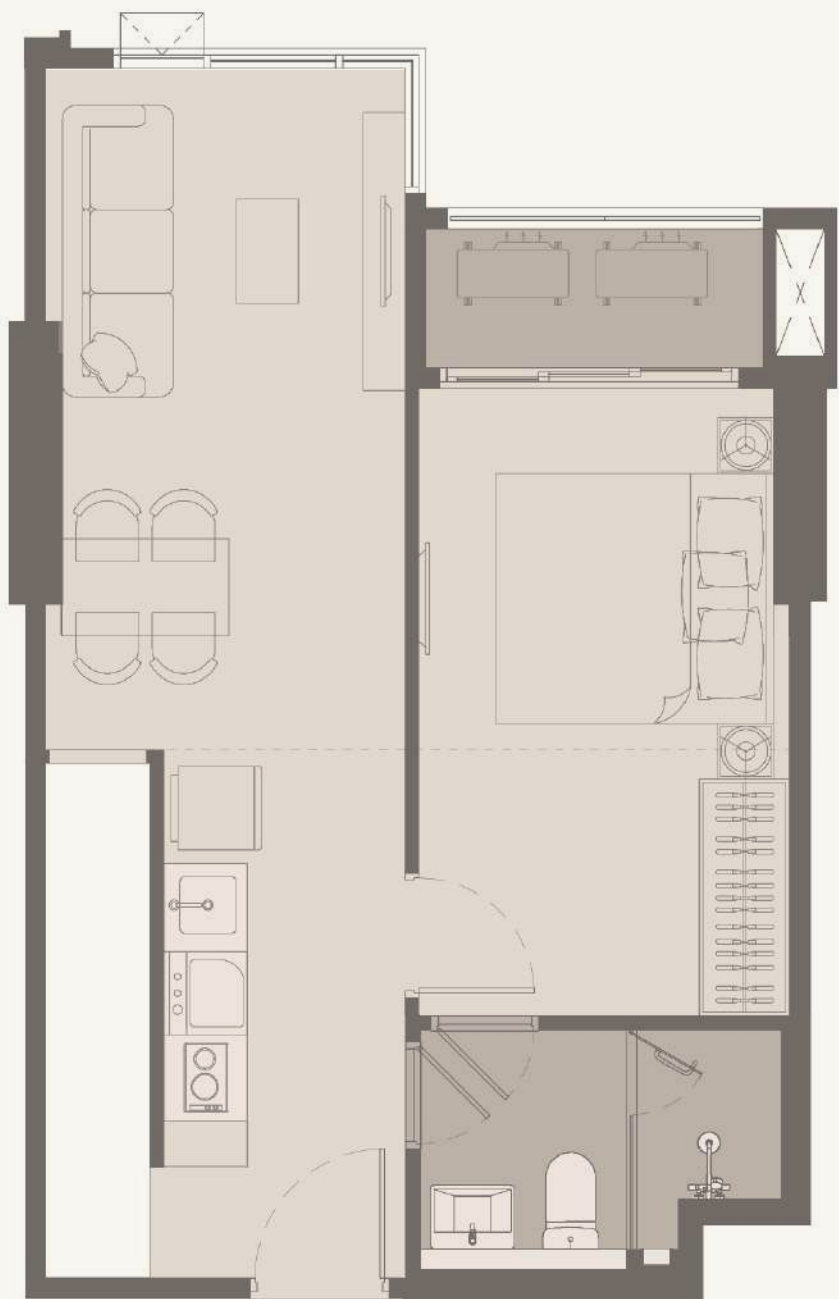


FURNITURE PACKAGE

G2 | 35 SQ.M.

*Stair, mezzanine and room partition are considered as furniture package and shall be installed for decoration and room function only and they will be provided by third party.

VERTIPLEX UNIT PLAN

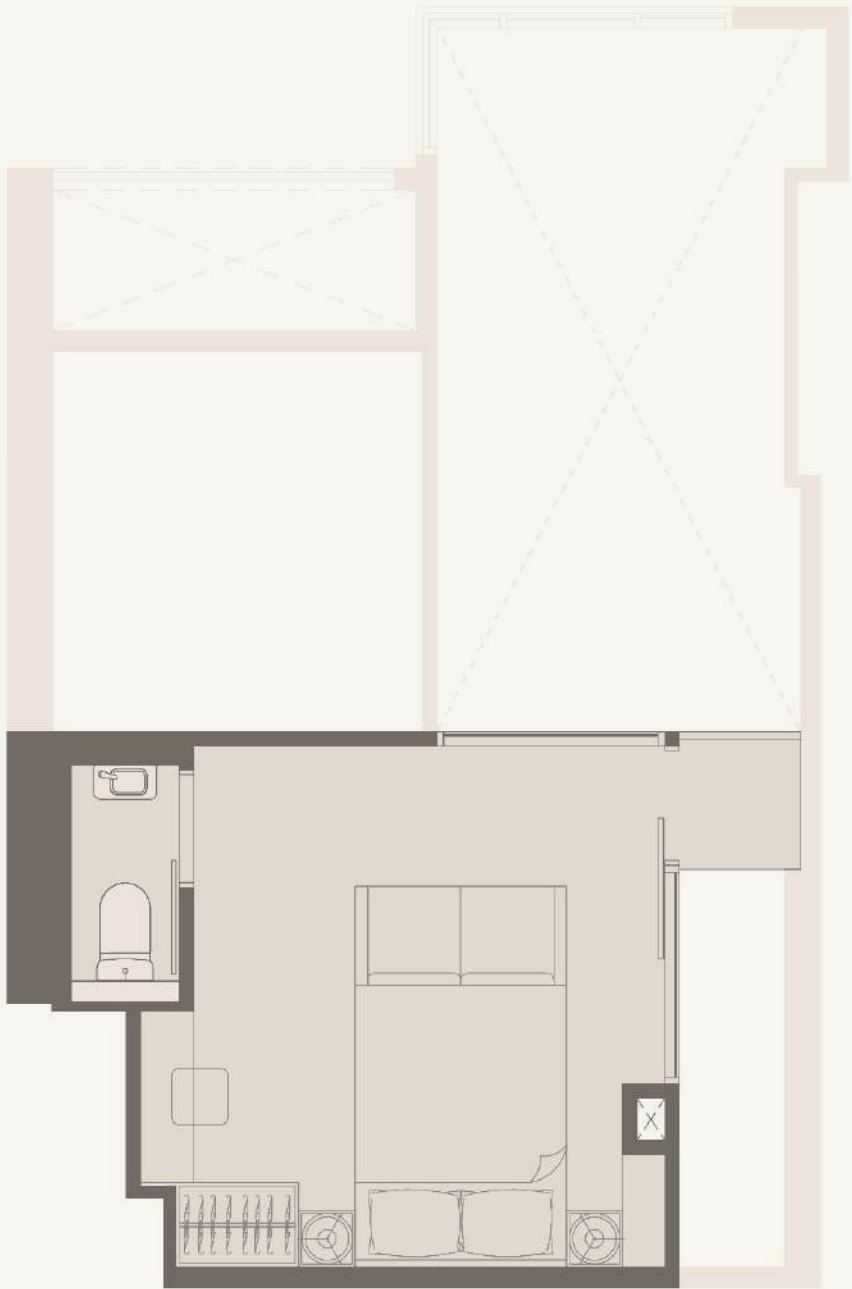


FURNITURE PACKAGE

H1 | 43.5 SQ.M.

*Stair, mezzanine and room partition are considered as furniture package and shall be installed for decoration and room function only and they will be provided by third party.

VERTIPLEX UNIT PLAN

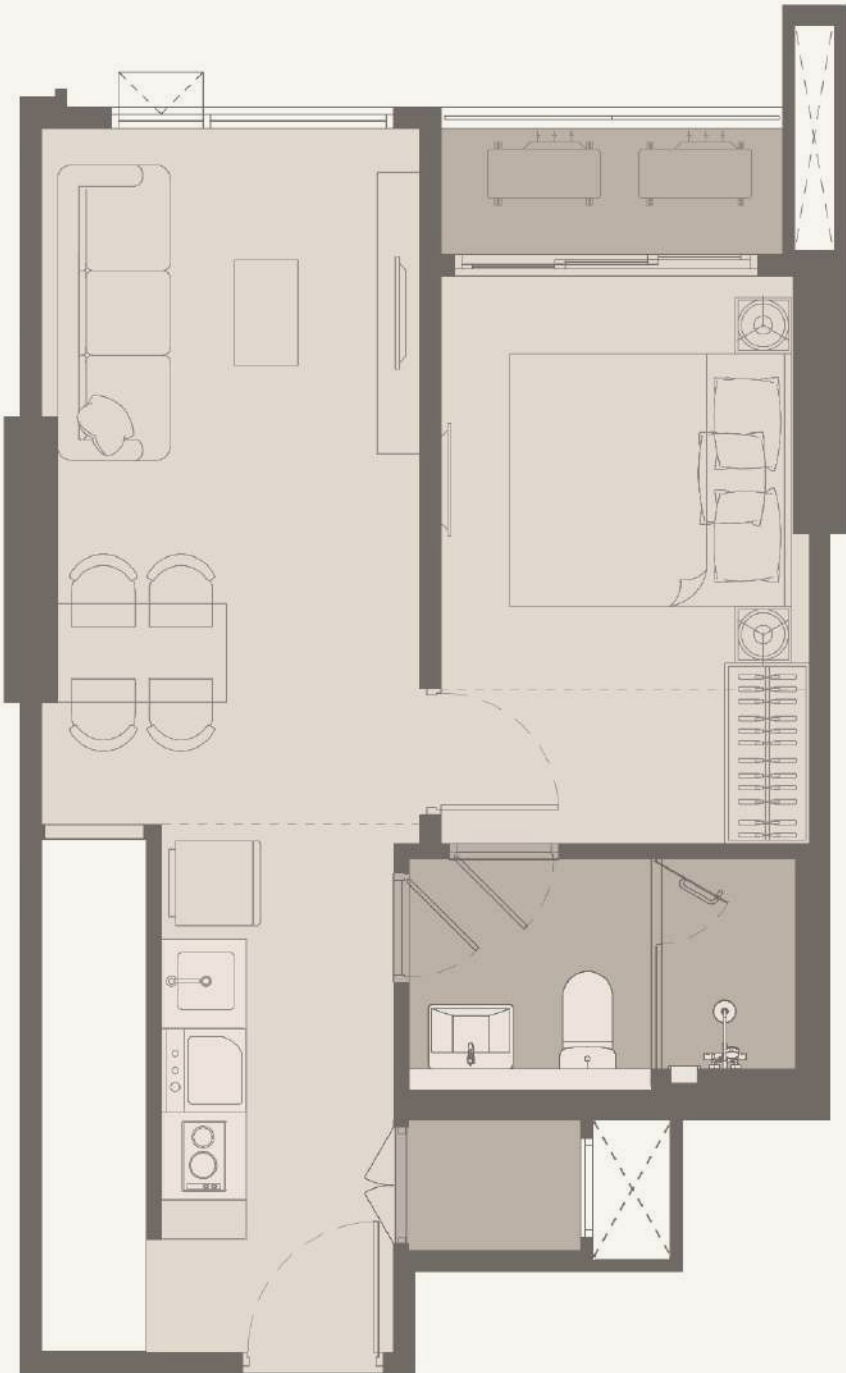


FURNITURE PACKAGE

HIM | 43.5 SQ.M.

*Stair, mezzanine and room partition are considered as furniture package and shall be installed for decoration and room function only and they will be provided by third party.

VERTIPLEX UNIT PLAN

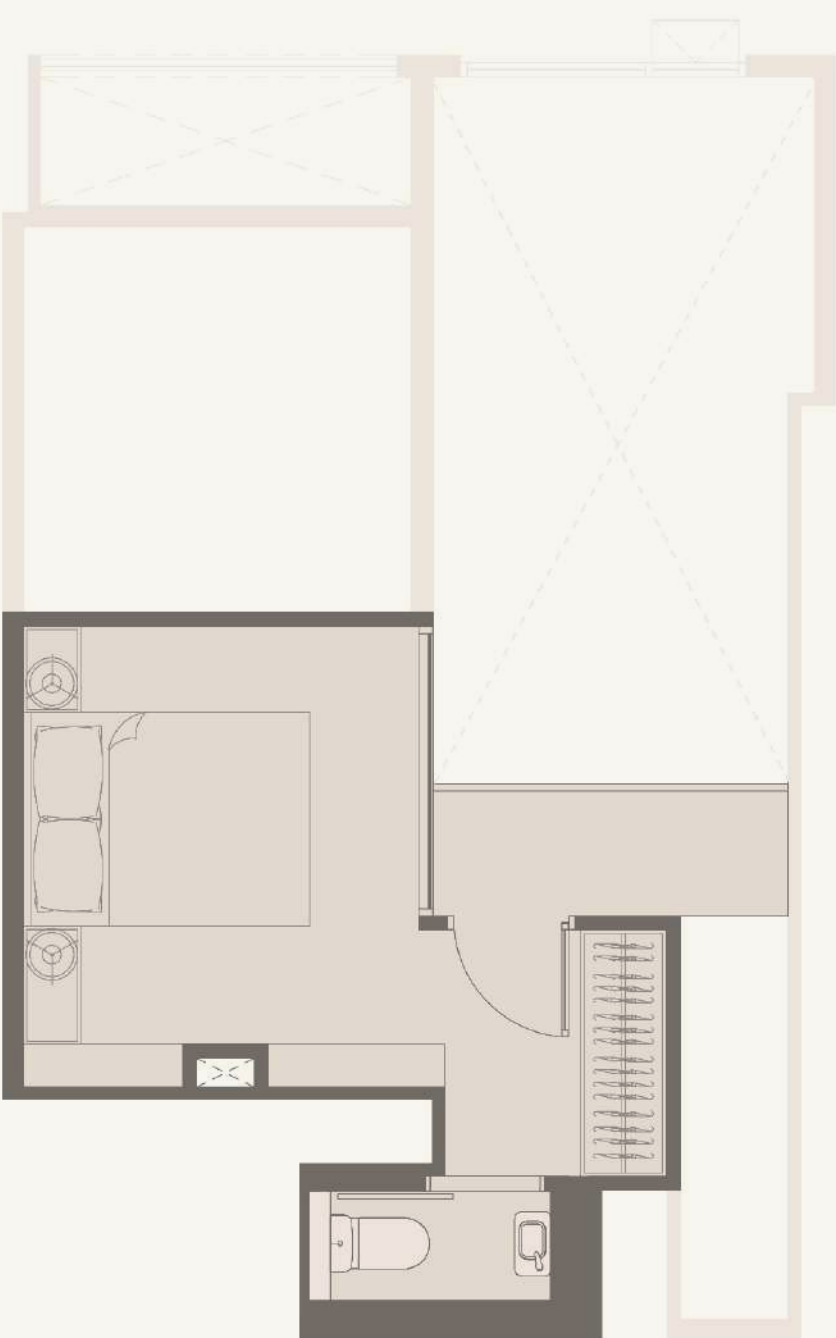
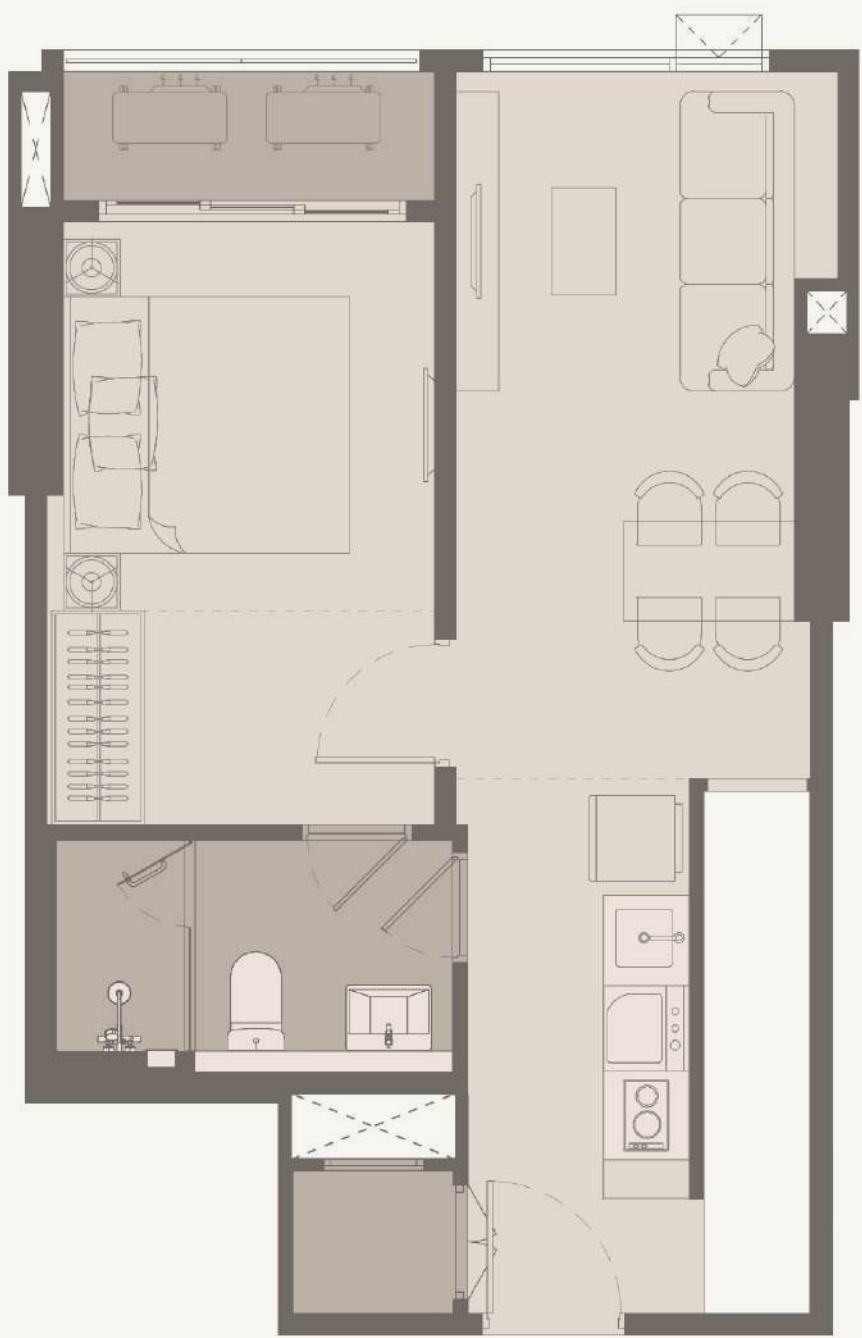


FURNITURE PACKAGE

H2 | 43.5 SQ.M.

*Stair, mezzanine and room partition are considered as furniture package and shall be installed for decoration and room function only and they will be provided by third party.

VERTIPLEX UNIT PLAN

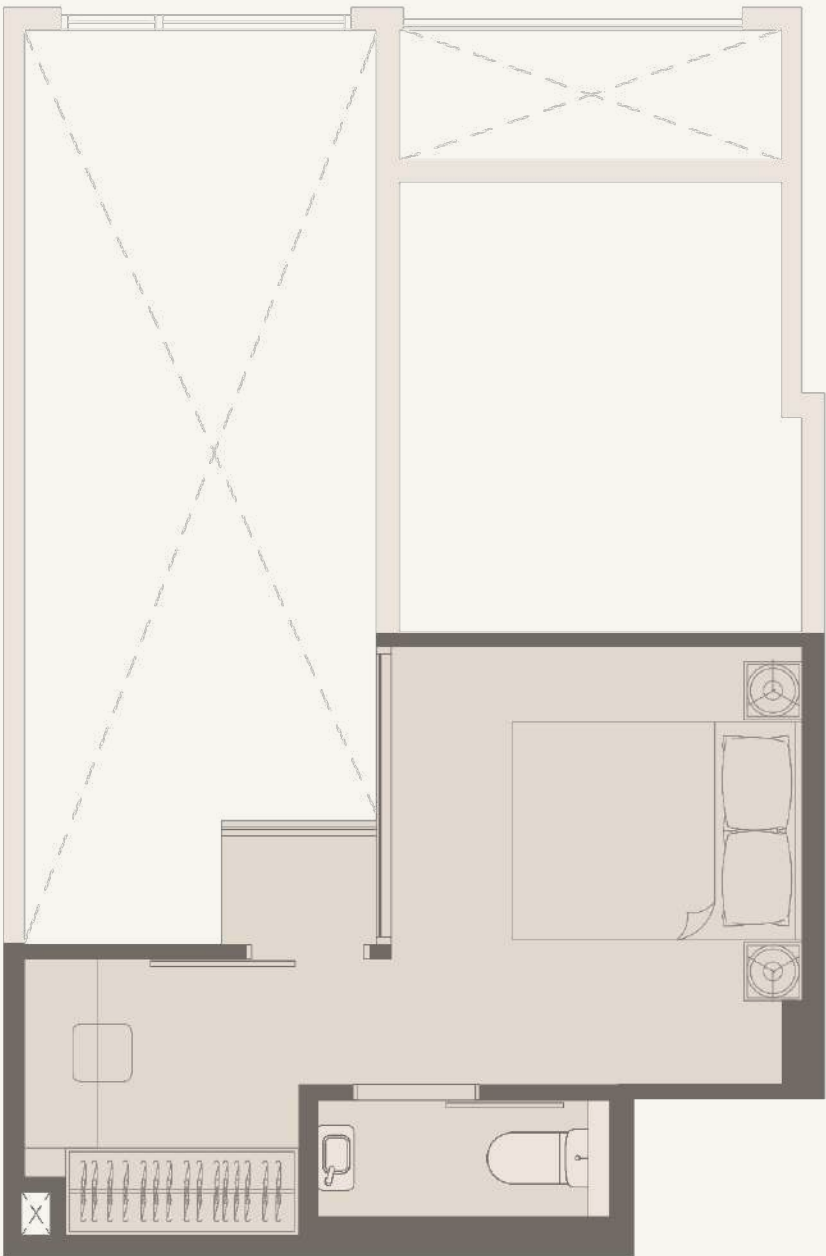
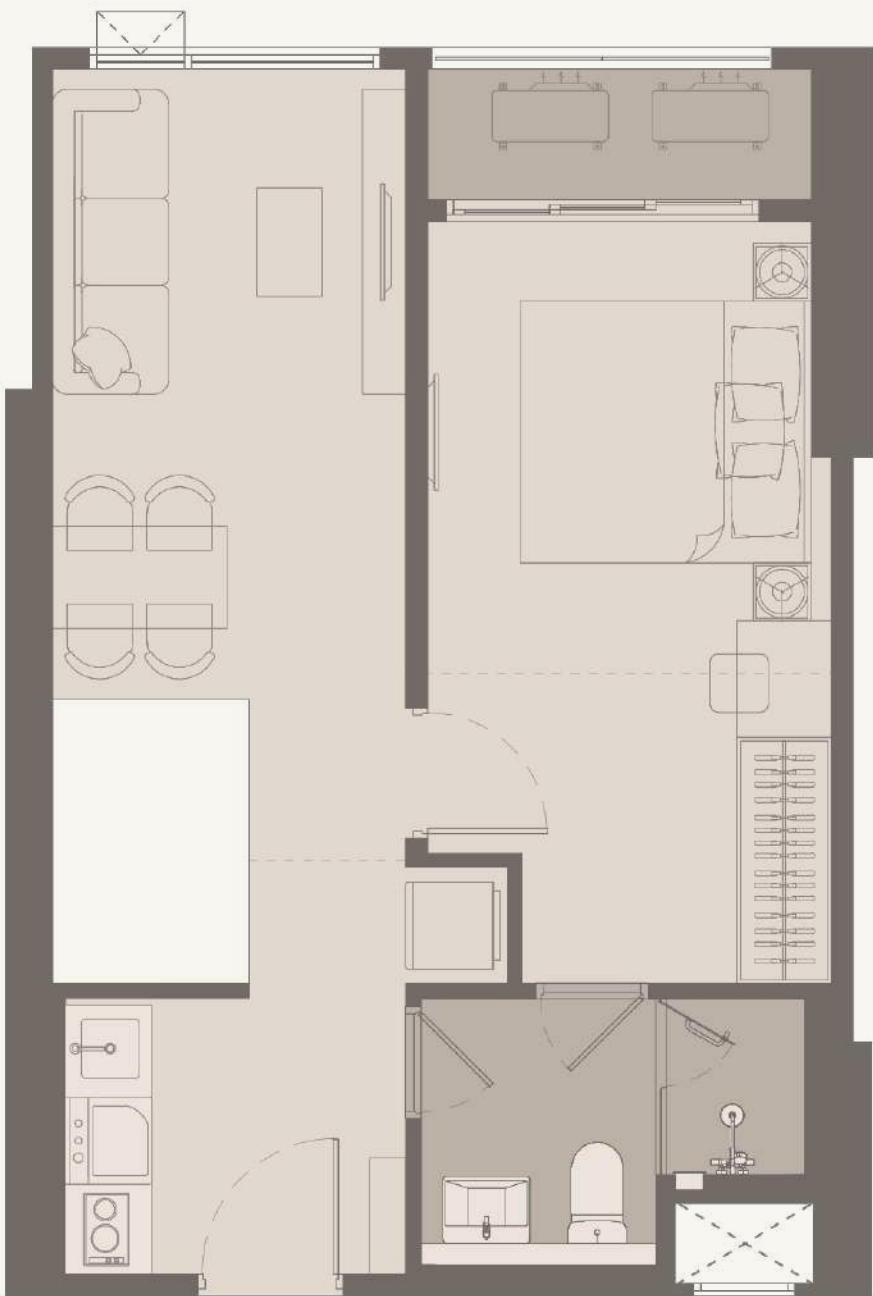


FURNITURE PACKAGE

H3 | 43.5 SQ.M.

*Stair, mezzanine and room partition are considered as furniture package and shall be installed for decoration and room function only and they will be provided by third party.

VERTIPLEX
UNIT PLAN



FURNITURE PACKAGE

H4 | 43.5 SQ.M.

*Stair, mezzanine and room partition are considered as furniture package and shall be installed for decoration and room function only and they will be provided by third party.

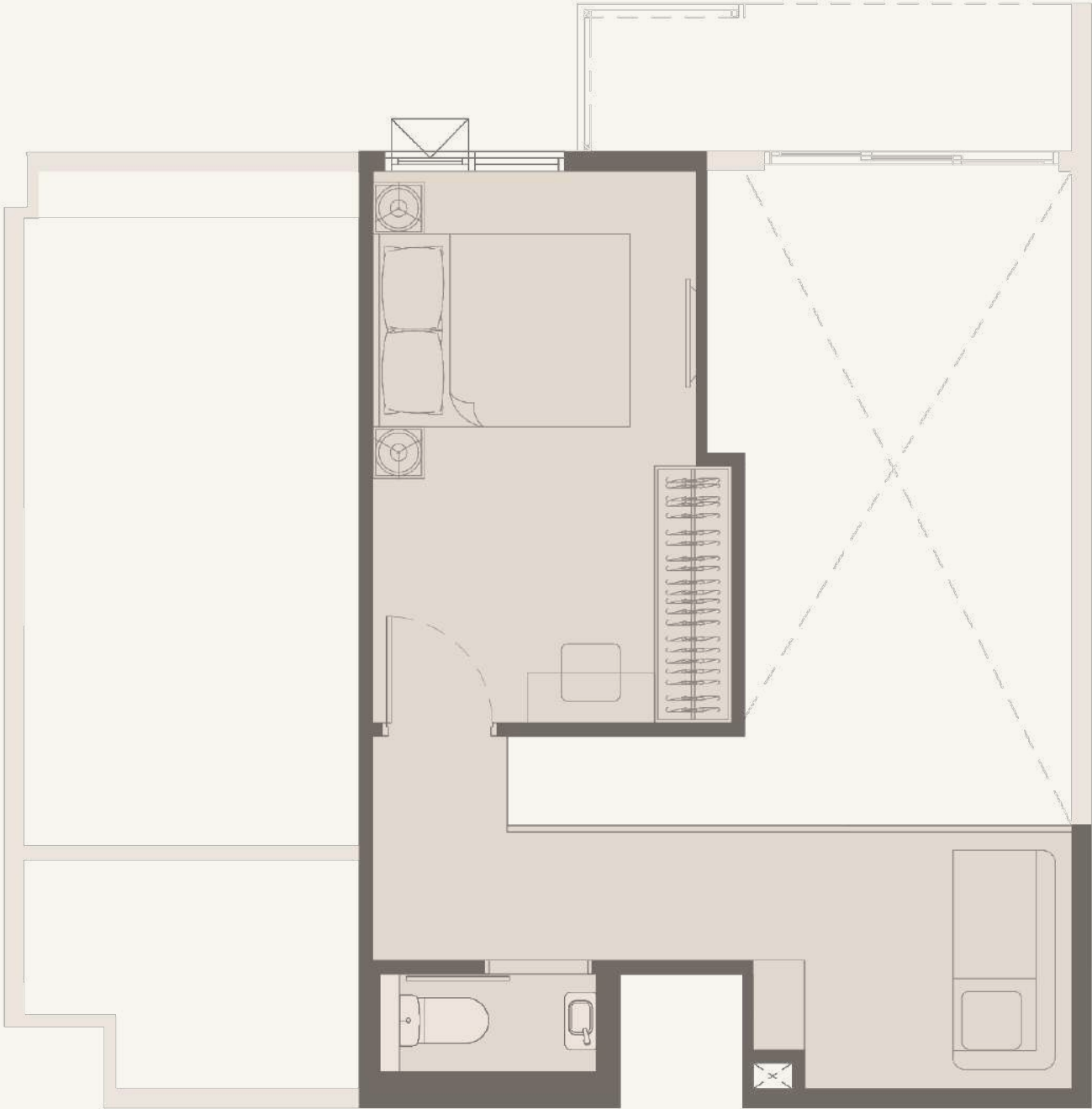
VERTIPLEX UNIT PLAN



II (LOWER) | 61 SQ.M.

*Stair, mezzanine and room partition are considered as furniture package and shall be installed for decoration and room function only and they will be provided by third party.

VERTIPLEX UNIT PLAN



FURNITURE PACKAGE

II (UPPER) | 61 SQ.M.

*Stair, mezzanine and room partition are considered as furniture package and shall be installed for decoration and room function only and they will be provided by third party.

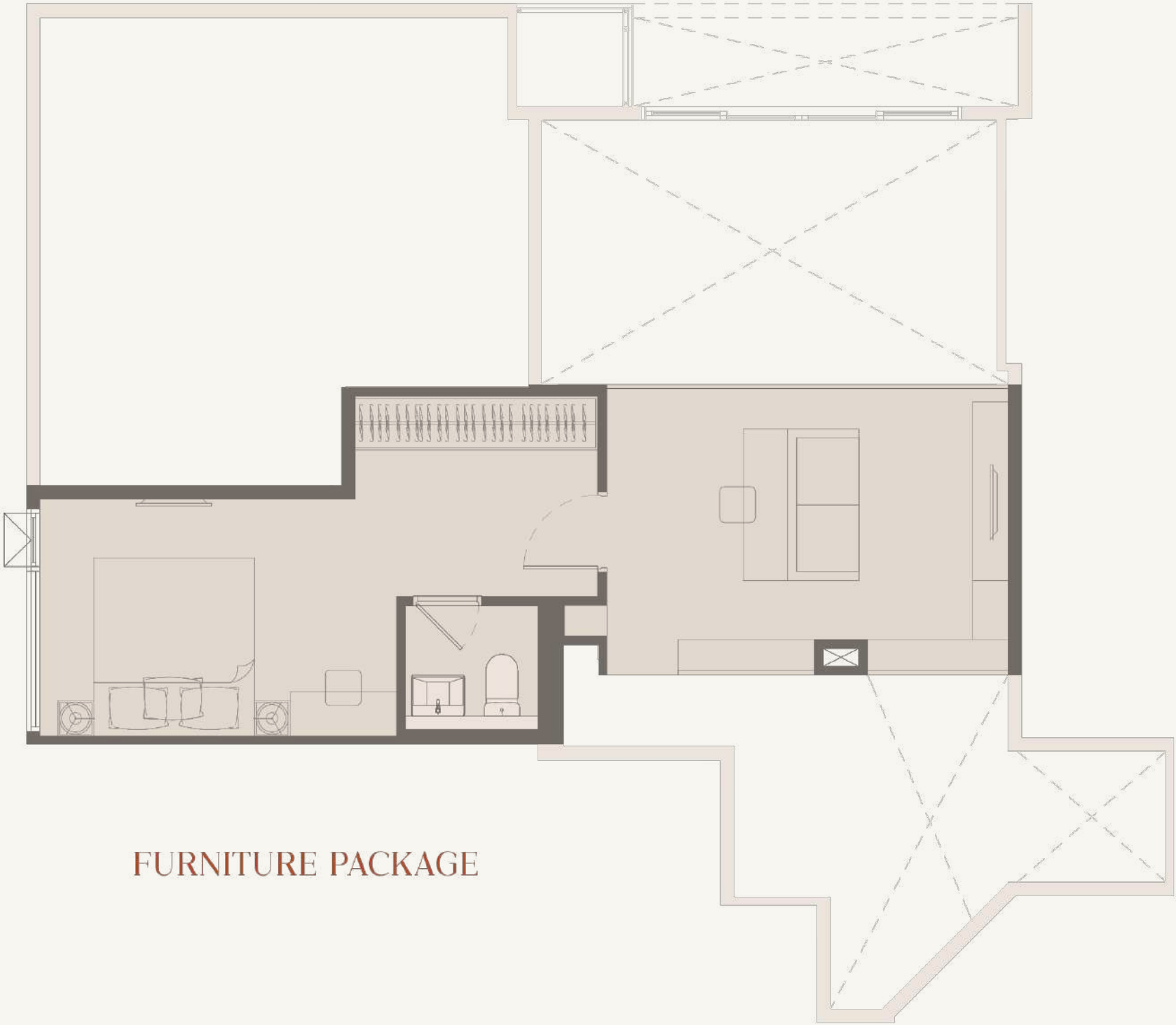
VERTIPLEX
UNIT PLAN



J1(LOWER) | 94.5 SQ.M.

*Stair, mezzanine and room partition are considered as furniture package and shall be installed for decoration and room function only and they will be provided by third party.

VERTIPLEX
UNIT PLAN



FURNITURE PACKAGE

J1 (UPPER) | 94.5 SQ.M.

*Stair, mezzanine and room partition are considered as furniture package and shall be installed for decoration and room function only and they will be provided by third party.

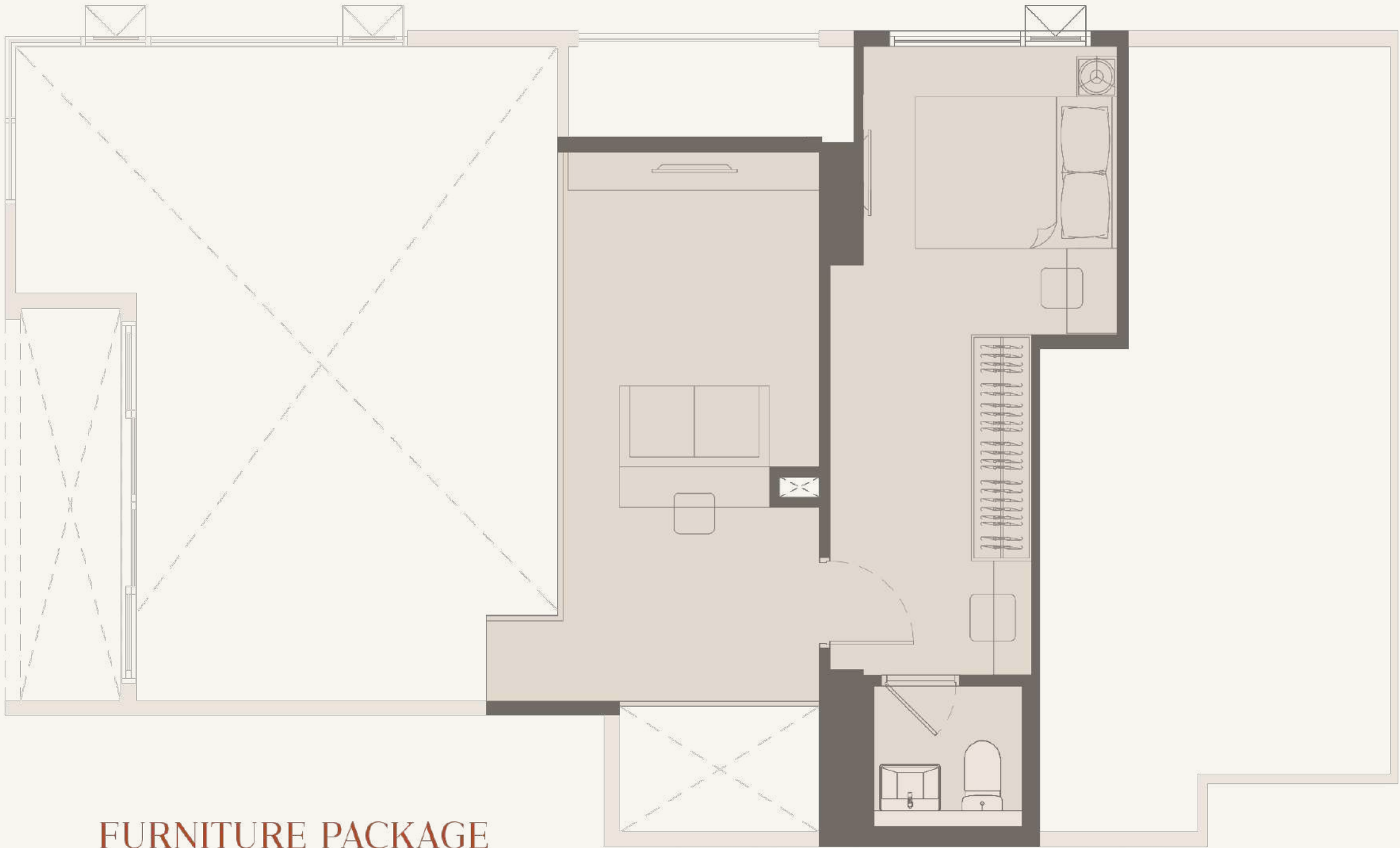
VERTIPLEX UNIT PLAN



J2 (LOWER) | 95.5 SQ.M.

*Stair, mezzanine and room partition are considered as furniture package and shall be installed for decoration and room function only and they will be provided by third party.

VERTIPLEX
UNIT PLAN



FURNITURE PACKAGE

J2 (UPPER) | 95.5 SQ.M.

*Stair, mezzanine and room partition are considered as furniture package and shall be installed for decoration and room function only and they will be provided by third party.

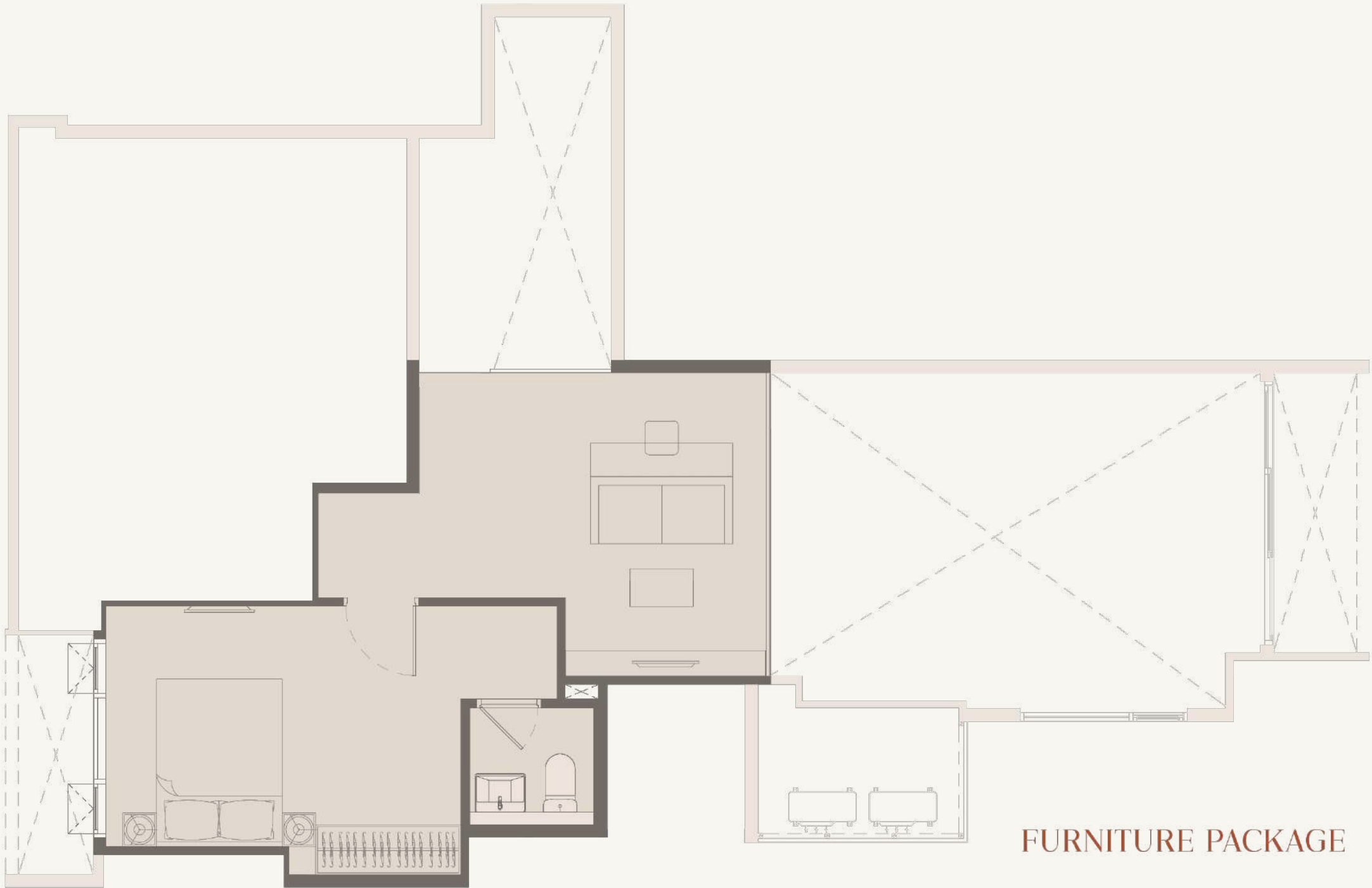
VERTIPLEX UNIT PLAN



KI (LOWER) | 101.5 SQ.M.

*Stair, mezzanine and room partition are considered as furniture package and shall be installed for decoration and room function only and they will be provided by third party.

VERTIPLEX
UNIT PLAN



KI (UPPER) | 101.5 SQ.M.

*Stair, mezzanine and room partition are considered as furniture package and shall be installed for decoration and room function only and they will be provided by third party.

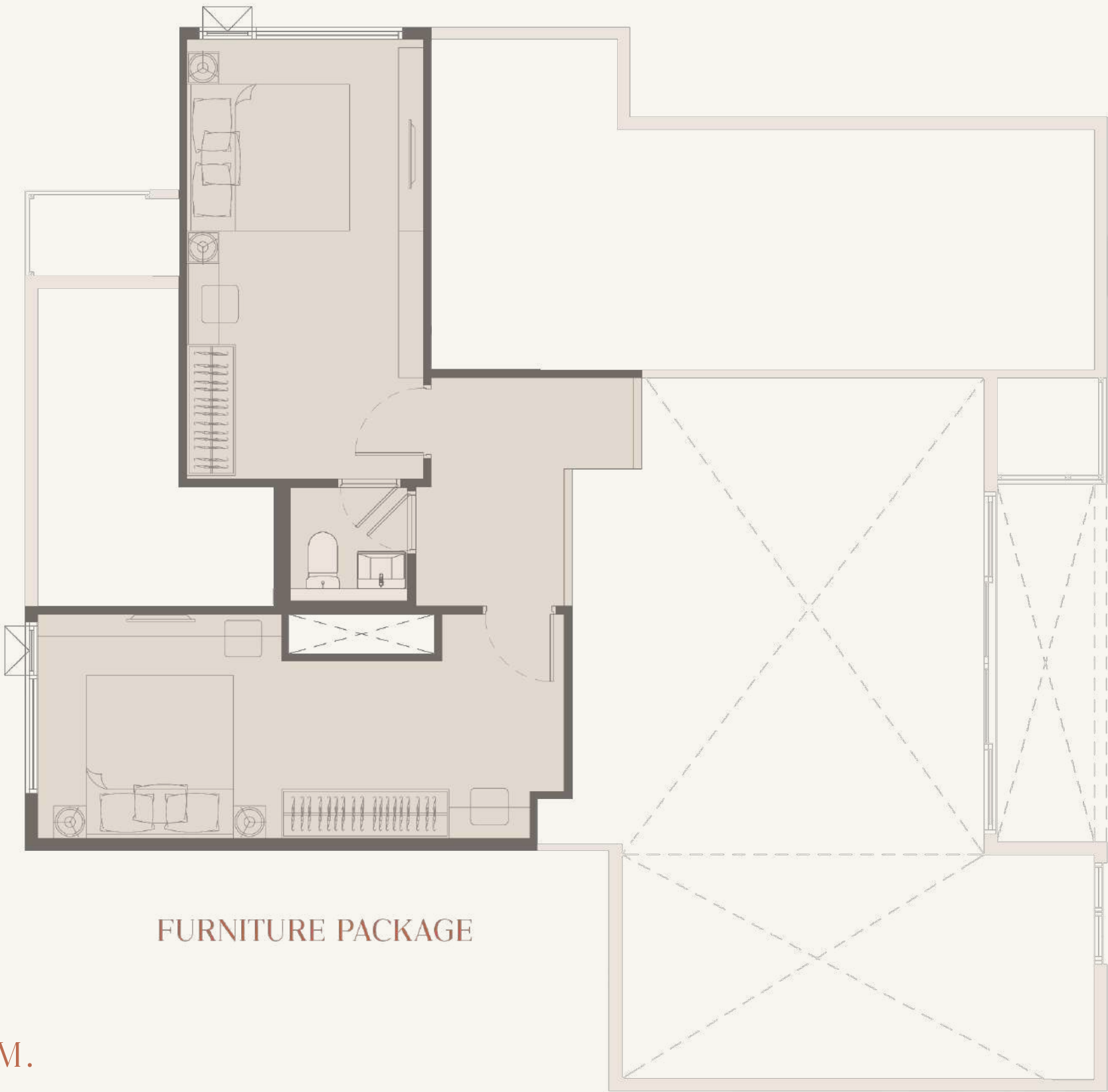
VERTIPLEX UNIT PLAN



L1 (LOWER) | 127.5 SQ.M.

*Stair, mezzanine and room partition are considered as furniture package and shall be installed for decoration and room function only and they will be provided by third party.

VERTIPLEX UNIT PLAN



FURNITURE PACKAGE

L1 (UPPER) | 127.5 SQ.M.

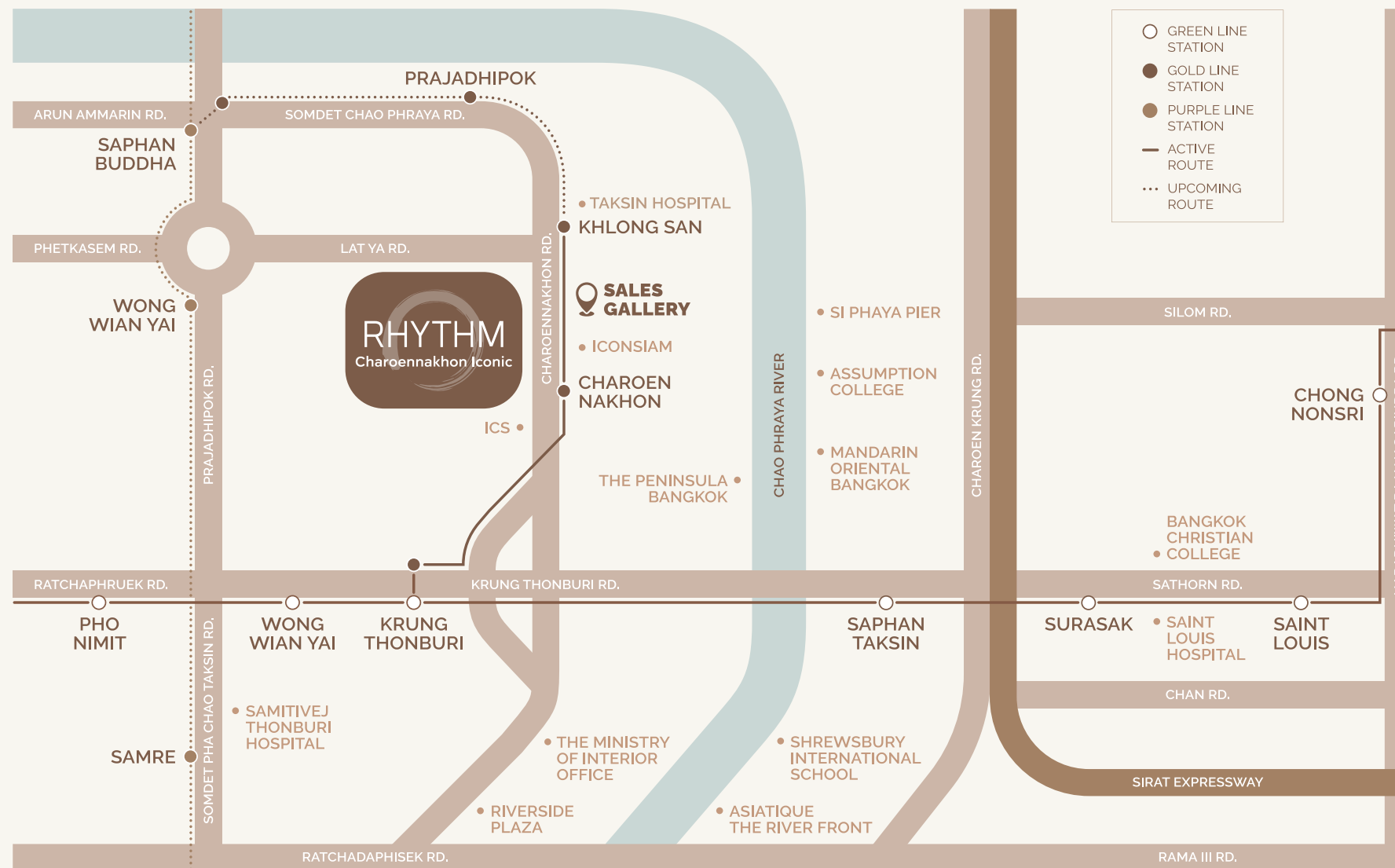
*Stair, mezzanine and room partition are considered as furniture package and shall be installed for decoration and room function only and they will be provided by third party.

*All the information and images shown are for representation of the project concept and for advertising purpose only. The company reserves the right to change the data and/or details of the construction as deemed appropriate or to be in line with the related authorities' consideration without prior notice.



ICONIC IN THE RHYTHM

RHYTHM IS IN THE DETAILS



THE HEART OF RIVER-CBD

- 100 m. Charoen Nakhon BTS station
- 110 m. Millennium Hilton Bangkok
- 130 m. ICONSIAM
- 150 m. ICS Lifestyle Complex
- 400 m. Khlong San Pier
- 500 m. The Oriental Spa at Mandarin Oriental
- 600 m. The Peninsula Bangkok

MORE INFORMATION

